

Fiberglas™ Reinforced Felt

The foundation for a better roofing system.

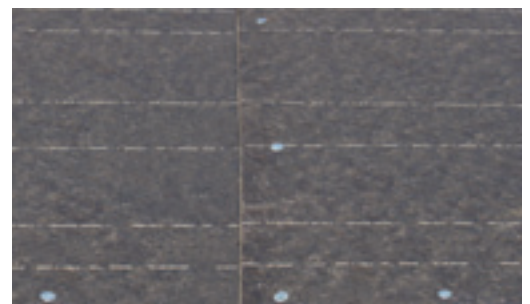


Owens Corning™ Fiberglas™ Reinforced Felt provides a critical layer of protection beneath your shingles to help prevent moisture from reaching the roof deck. It's a vital part of a complete Owens Corning™ Roofing System.

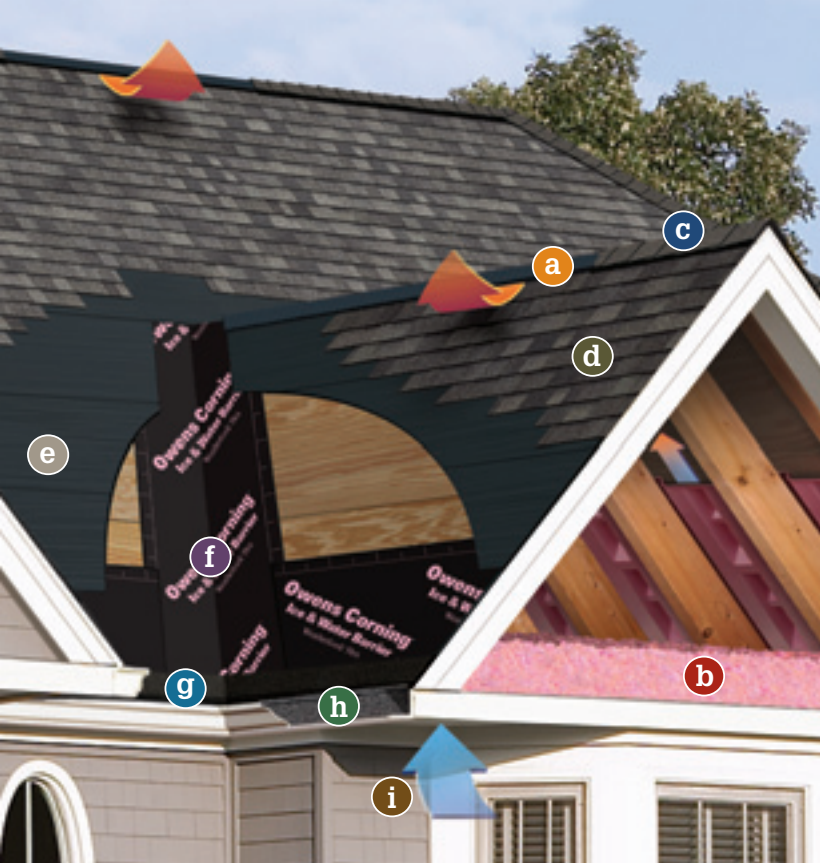
- **Lays flat**—reinforced with *Fiberglas* to support flatter, more uniform shingle applications
- **Highly resistant to wrinkling**—unlike standard felt, when exposed to moisture and wind, the *Fiberglas* Reinforced Felt resists curling or pulling away from the fasteners
- **Increased tear strength**—stronger than standard felt, it resists tearing away from fasteners when walked on or in strong wind
- **Superior roof deck protection vs. standard felt**—helps prevent water infiltration under shingles from wind-driven rain and other sources



Standard felt tears and curls away from fasteners after exposed to moisture.



Fiberglas™ Reinforced Felt lays flat and resists tearing or pulling away from fasteners.



The essentials for a healthy roofing system.

It takes more than just shingles to create a high-performance roof. It requires a system of products working together. Owens Corning™ Roofing Essentials™ Accessory Products work with our shingles to make up a roofing system that helps provide maximum durability for your roof. And the most protection for your home.

- a** VentSure® Ventilation Products
- b** PINK Fiberglas™ Blown-In Insulation
- c** Owens Corning™ Hip & Ridge Shingles
- d** Owens Corning™ Shingles
- e** Owens Corning™ Underlayment Products
- f** WeatherLock® Self-Sealing Ice & Water Barrier Products
- g** Owens Corning™ Starter Shingle Products
- h** RapidFlow® Gutter Drainage Protection
- i** Undereave Ventilation Products



**OWENS CORNING
ROOFING AND ASPHALT, LLC**
ONE OWENS CORNING PARKWAY
TOLEDO, OHIO, USA 43659

1-800-GET-PINK™
www.roofing.owenscorning.com

Pub. No. 10009419. Printed in U.S.A. May 2010.
THE PINK PANTHER™ & © 1964–2010 Metro-Goldwyn-Mayer Studios Inc. All Rights Reserved. The color PINK is a registered trademark of Owens Corning. ©2010 Owens Corning.

(Atlanta, Brookville, Compton, Denver, Jacksonville, Kearny, Medina, Memphis, Minneapolis, Portland, Savannah, Summit)



Product Specifications

Roll Size	3' x 141.5'
Coverage (with 2" lap)	400 sq. ft.
Nominal Roll Weight	42 lbs.

Construction

Surface	Asphalt organic felt
Interior Reinforcement	Fiberglas™
Color	Black
Laying Lines	2" and 17" in from edge

Physical Properties*

Tensile Strength	ASTM D 146	—
Longitudinal (md)	—	50 lbs./in.
Transverse (cd)	—	22 lbs./in.
Tear Resistance	ASTM D 1922	—
Longitudinal (md)	—	448 grams
Transverse (cmd)	—	518 grams
Pliability	ASTM D 228	—
Longitudinal (md)	—	Passed
Transverse (cd)	—	Passed
Resistance to Liquid Water Transmission	ASTM D 4869	Passed
Dimensional Stability	ASTM F 1087	1.65 max.

Applicable Standards and Codes

Fiberglas Reinforced Felt is manufactured to comply with ASTM D 6757 and manufactured to meet all the performance requirements of ASTM D 226 and ASTM D 4869, including resistance to liquid water transmission.

The use of *Fiberglas* Reinforced Felt along with proper decking materials and asphalt or organic shingles will help in meeting Class A or Class C Fire Ratings. A shingle by itself is not fire rated, although it is part of the roofing assembly.

*All values are approximate.